

SHOREVIEWS



SPRING 2025

City News and Recreation Catalog

City news	4
Resident resources	8
Community center	14
Recreation programs	23



In this Issue

City news	4
Resident resources	8
Registration information	13
Community center	14
Event rentals	17
Group fitness	21
Adult sports	26
Adult programs	27
Aquatics	34
Kids Corner Preschool	44
Youth programs	46
Youth sports	51
Jobs	58
Recreation areas	59

Events at a Glance

**SPRING BREAK
TROPICAL PUZZLE
PALOOZA!**

**THURS, MARCH 27
6-8 PM**

See page 39 for details

**\$30
SV RES**

\$33

Citizens Academy

Tuesdays, April 1 - May 13, 5:30 - 8:30 pm

Learn about how the city operates through tours, speakers, and interactive sessions.

Registration required.

More info at shoreviewmn.gov



**\$9 ADULT
\$15 CHILD**

BAMBOO BAY EGG HUNT

**SUN, APRIL 6
9 – 11am**

See page 39 for more details

\$15

BUNNY HOP TRAIL

**SUN, APRIL 12
10 am – noon**

See page 39 for more details

\$15

SPRING ROYAL TEA

**SUN, MAY 18
3 – 4:30 PM**

See page 39 for more details

Contact Us

City Hall	651-490-4600
Community Center	651-490-4700
Parks and Recreation	651-490-4750
Building Permits	651-490-4683
Code Enforcement	651-490-4689
Forestry	651-490-4665
Human Resources	651-490-4619
Planning and Zoning	651-490-4680
Recycling	651-490-4650
Sewer & Water	651-490-4661
Streets	651-490-4671
Utility Billing	651-490-4630

POLICE & ANIMAL CONTROL

Police protection and animal control are provided by Ramsey County Sheriff's Office.

For non-emergencies 651-767-0640

For emergencies 911

FIRE

Fire protection is provided by the Lake Johanna Fire Department.

For emergencies 911 Dispatch

Non-emergency 651-415-2100

CITY OFFICIALS

Sue Denkinger, mayor

651-490-4618 | sdenkinger@shoreviewmn.gov

John Doan, council member

612-424-2527 | jdoan@shoreviewmn.gov

Paul Gardner, council member

763-443-5218 | pgardner@shoreviewmn.gov

Shelly Myrland, council member

763-291-0185 | smyrland@shoreviewmn.gov

Cory Springhorn, council member

651-403-3422 | cspringhorn@shoreviewmn.gov

Brad Martens, city manager

651-490-4611 | bmartens@shoreviewmn.gov





MEETING BROADCAST SCHEDULE

Channel 16 broadcasts live city council and planning commission meetings every month.

Live Shoreview City Council Meetings

- First and third Monday every month at 7 pm

Live Shoreview Planning Commission Meetings

- Fourth Tuesday of the month at 7 pm

View the full schedule and replay information at shoreviewmn.gov. Council and planning commission meetings can be streamed live at shoreviewmn.gov/agendas.

Like

Follow

Share

@cityofshoreview

ACCESS SHOREVIEW

Sign up to receive our online newsletter that is sent after each meeting with news and events.

Visit bit.ly/AccessShoreview

MEET THE COUNCIL

MAYOR SUE DENKINGER

In November, Sue Denkinger was elected for a second term as mayor. Her current term ends December 31, 2026.

Mayor Denkinger holds regular office hours on the first and third Tuesday, from 3 – 5 pm at city hall.

651-490-4618 | sdenkinger@shoreviewmn.gov



COUNCILMEMBER JOHN DOAN

Councilmember Doan is serving his first four-year term in 2022. His current term ends December 31, 2026.

763-355-8746 | jdoan@shoreviewmn.gov



COUNCILMEMBER SHELLY MYRLAND

In November, Shelly was elected to her first four-year term. Her current term ends December 31, 2028.

763-291-0185 | smyrland@shoreviewmn.gov



COUNCILMEMBER CORY SPRINGHORN

Councilmember Springhorn is serving his third four-year term in 2022. His current term ends December 31, 2026.

651-403-3422 | cspringhorn@shoreviewmn.gov



Learn more about each of the council members at shoreviewmn.gov





PAUL GARDNER JOINS THE SHOREVIEW CITY COUNCIL

Paul Gardner was elected to the Shoreview City Council in 2024 and took office on January 6, 2025. Councilmember Gardner has been serving the community for 25 years and was selected as the Shoreview Citizen of the Year in 2021.

Councilmember Gardner's community service started in high school with the National Park Service in Virginia where he cataloged archaeological collections, worked on trails, and spoke with visitors. Since moving to Shoreview he has served in a number of ways, such as the environmental quality committee, Minnesota House of Representatives, Ramsey Conservation District, and recycling coordinator for the Slice of Shoreview.

When he's not volunteering, Paul is working on achieving a net-zero energy status for his house. By using solar, energy-efficient appliances, and electric vehicles, they've been able to reduce their energy consumption and didn't pay for gas at all in 2024. He is also an amateur genealogist, working on identifying who is who in historical records and how they fit into bigger historical trends.

When asked why he got involved in community service, Councilmember Gardner stated "To me, community service is about duty. I have enough of everything I need in life so there is a responsibility to take part in jobs that not everyone wants to do." He also noted "There is always something going on in Shoreview with so many people participating in city committees or other organizations so it's an easier lift, many hands make light work."



EQUITY AND INCLUSION SURVEY

We want to hear from you! The Shoreview Human Rights Commission is conducting an online equity and inclusion survey. Through the survey, we will learn about your experiences and identify strengths and challenges in our community. Once completed, the HRC will review the results to see if there are any areas to focus on to ensure Shoreview is a community where all people are welcomed, valued, and respected.

Take the survey at polco.us/shoreviewmn today!

- Takes about 5 - 10 minutes to complete
- Answers are confidential
- Questions are voluntary

Survey closes March 14.

**WE WANT
TO HEAR
FROM YOU!**



2024 SHOREVIEW CITIZEN OF THE YEAR: CAROL BROWN-MILLS

Carol Brown-Mills was honored by the city council with the 2024 Shoreview Citizen of the Year Award in November 2024.

Carol has been giving back to the community for over three decades both as an educator and in her volunteer work. She has served on the Shoreview Community Foundation for almost six years as secretary and a member of the marketing and communications committee.

In addition to the community foundation, Carol also volunteers with a number of musical or theatre productions including the Merry Minstrels, Mounds View Community Theatre, Peace Praise Singers, Shorewind Quintet, and many others. In the supporting nomination, Helen Nelson and Sandy Martin state:

"Carol is an indispensable part of every activity in which she engages. She quietly works behind the scenes to make certain that every detail has been covered. Her creativity facilitates outreach and inclusion by building bridges of understanding. She is always eager to lend a hand, the first to come and the last to leave, to ensure that a goal or event is accomplished. Her talents are used to benefit our entire community and she would be a very deserving citizen of the year!"

When asked if she has any advice for someone who wants to start volunteering, Carol said "Find a way to engage that will benefit your community as well as your passion."



2024 CARING YOUTH AWARD WINNER: ZOE BUZAN

Zoe Buzan received the 2024 Caring Youth Award in November 2024. This annual award, created by the Shoreview Human Rights Commission, honors the city's outstanding youth. It reminds us that anyone, no matter their age, can help form the foundation of our community.

As a sophomore at Mounds View High School, Zoe is using her love of nature, art, and education to give back to the community. Since 2022, Zoe has volunteered with the Silverwood Teen Arts Council and helped plan several teen events. She also serves as a Junior Assistant Naturalist at Tamarack Nature Center, where she volunteers over 30 hours per week to help run their summer camps.

According to Seth Eberle, a volunteer liaison at Silverwood Park, Zoe is an invaluable asset to their team. He has seen her grow over the last two years and noted that she has an exceptional ability to listen thoughtfully, foster collaboration, and create an inclusive atmosphere where others feel encouraged to socialize and connect.

When asked what her favorite part of volunteering is, Zoe noted that it's knowing that she can make an impact in others' lives, especially younger kids.

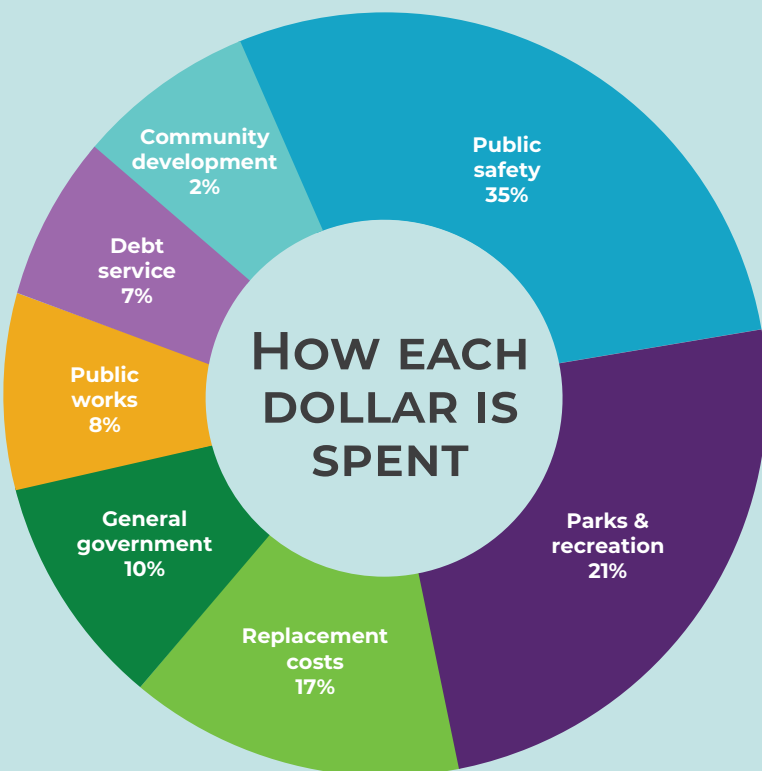


BUDGET HIGHLIGHTS

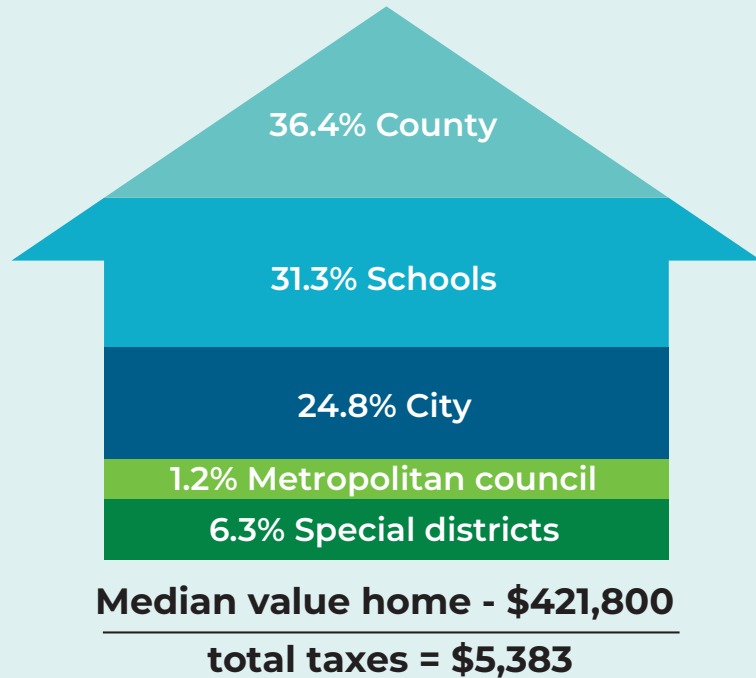
The City of Shoreview adopts its operating budget, capital improvement program, and five-year operating plan every two years. Since 2025 is the second year of these documents, the city council amended the operating budget and capital improvement plans in 2024.

BUDGET & CAPITAL PLAN SUMMARY

Total expenditures & transfers out			\$55,825,129
ENTERPRISE BUDGET	GENERAL FUND	DEBT FUNDS	
\$12,600,465	\$17,040,438	\$2,017,515	
CAPITAL IMPROVEMENT	SPECIAL REVENUE	INTERNAL SERVICE	
\$13,240,930	\$9,184,837	\$1,740,944	
General fund revenue & transfers in			\$17,040,438
General fund expenditures & transfers out			\$17,040,438



WHERE DO PROPERTY TAXES GO?



Shoreview's portion ranks sixth lowest when compared to 28 peer cities in the metro area.

2025 PROJECTS

Park projects

- Buildings at Bobby Theisen and Shoreview Commons
- Playground at Bobby Theisen and Shamrock

Ash tree removals and replacements in city right-of-way

Trail & utility improvement projects

- Boardwalk replacement along County Road I between Lexington Avenue and Chatsworth Street*
- Boardwalk extension south of Sherwood Road to McCullough Park*
- Water main installations to connect dead-ends throughout the city

*The city is partnering with Ramsey County on these projects.



2025 ENVIRONMENTAL QUALITY COMMITTEE SPEAKER SERIES

The speaker series will be held at city hall in the council chambers at 7 pm on the following dates. Visit shoreviewmn.gov/eqc to find out more and view the presentations after the event takes place.

February 24, 7 pm

New Environmental Service Center

Ramsey County will share updates on the construction of the new Environmental Service Center set to open in April this year in Roseville. The center will provide recycling and waste disposal services to county residents.

March 24, 7 pm

Our Lakes and Winter Salt

Rice Creek Watershed District will present on the impacts winter deicing products, such as salt, have on water quality and the lakes we love.

April 28, 7 pm

Energy Opportunities for Your Home

Learn about available rebates and programs for energy efficiency and renewable energy projects for your home from the Partners in Energy program and Xcel Energy.



SPRING CLEAN UP DAY

SATURDAY, MAY 17, 2025

OPEN TO SHOREVIEW RESIDENTS ONLY

7 am - noon
McCullough Park

955 County Road I

(Enter from westbound County Rd I)

cash or check only



Find fees and accepted items online at shoreviewmn.gov/cleanupday

GREEN COMMUNITY AWARDS

Did you install solar panels, plant a native garden, or do another environmentally friendly project this year? Apply for a Green Community Award!

Each year, the Shoreview Environmental Quality Committee recognizes residents and businesses that have had a positive impact on our environment. The green community awards are given to those who improve water quality, install renewable energy, or use eco-friendly practices.

Winners receive a small lawn stake and are recognized at a city council meeting in early fall.

Applications are available at shoreviewmn.gov and due by July 11. Questions? 651-490-4665.



2025 Annual Tree Sale

Order now for the 2025 Shoreview tree and shrub sale. Trees are an important part of your yard and our urban landscape. Planting a wide variety of trees and shrubs increases diversity and improves resilience in yards and the community.

Residents can purchase up to 5 trees and 10 shrubs per household at wholesale prices. Watering bags are available for purchase with the purchase of a deciduous tree. Watering bags are not suggested for evergreen trees or shrubs.

Orders are due **Friday, April 11, 2025** and trees will be delivered to your home by crews in mid-late May. Wholesale trees and shrubs do not include a guarantee; please be prepared to plant and care for the trees. Open to Shoreview residents only

2025 TREE AND SHRUB ORDER FORM

Name: _____

Address: _____

Phone: _____

Email: _____

SPECIES	CONTAINER SIZE	HEIGHT (FEET)	WIDTH (FEET)	SHADE TOLERANCE	FALL COLOR	PRICE	SUBTOTAL
Alleman's Compact Dogwood	#5	4 – 5'	4 – 5'	Full sun to part shade	Red-purle	\$33	
Regent Serviceberry	#5	4 – 6'	4 – 8"	Full sun to part shade	Yellow-red	\$38	
Thornless Hawthorn	#10	15 – 20'	15 – 20'	Full sun	Bronze/red	\$132	
Blue beech	#10	20 – 30'	30'	Full sun to part shade	Orange to red	\$176	
Whitespire birch	#10	40 – 50'	20 – 30'	Full sun to part shade	Yellow	\$122	
Bur oak	#10	60 – 80'	60 – 80'	Full sun	Yellow-brown	\$192	
Eastern hemlock	#10	70'	25 – 35'	Part shade to shade	Dark green	\$122	
Swiss White Pine	#10	25 – 30"	15'	Full to part sun	Green	\$185	

Tree watering bag – holds 20 gallons

\$21



Shrubs



ALLEMAN'S COMPACT DOGWOOD

Small white flowers in late spring lead to small white berries in late summer. Red stems provide interest year round. Tolerates wet soil.



REGENT SERVICEBERRY

A medium sized multi-stemmed shrub. White flowers in spring and purple-black berries in summer. Leaves turn yellow and red in fall. Tolerates dry sites.

Deciduous trees



THORNLESS HAWTHORN

Smaller, ornamental tree with dense, horizontal branches and glossy green leaves. White flowers in spring and red fruit in fall attract birds. Drought tolerant.



BLUE BEECH

A small to medium sized, native tree with unique bark. Slow growing and shade tolerant. Leaves turn orange-red tones in fall.



WHITESPIRE BIRCH

A cultivar of the native gray birch with resistance to bronze birch borer. Medium sized tree with white, non-peeling bark. Pyramidal form with branches low to ground. Leaves turn yellow in fall.



BUR OAK

A large native tree with a rounded, broad shape. Slow to moderate growth rate. Does well in full sun and drought tolerant once established. Large dark green leaves turn yellow-brown in fall.

Evergreen trees



EASTERN HEMLOCK

A pyramidal evergreen with drooping branches and small cones. Dark green foliage that holds color year round. Prefers protected sites out of wind.



SWISS WHITE PINE

Swiss white pine, Prairie Statesman - A dense, columnar evergreen with upward and inward curving branches. Needs full sun. Slow to moderate growth and tolerant of dry conditions.

Watering



TREE WATERING BAG

The tree watering bag is a slow release watering system for trees. One watering bag holds approximately 20 gallons of water and drips 6-10 hours with two holes open, reducing watering frequency by 50% and significantly reducing transplant shock..



SHOREVIEW COMMUNITY FOUNDATION NEWS

The Shoreview Community Foundation's mission is to maintain, enhance, and enrich the quality of lives in Shoreview by connecting the generosity of our residents with the community's evolving needs. Thanks to the generosity of our residents and stakeholders, we were able to grant over \$37,000 to various organizations in 2024.

The Shoreview Community Foundation (SCF) Advisory Board is currently engaged in a strategic planning process to address the evolving needs of the community and to plan for the future of the organization. During this process, one common question has emerged: In what ways might we increase our impact in key areas of need, and perhaps create larger, lasting projects?

In focus groups and listening sessions with community members, some clear themes have surfaced:

- Arts are important to the community's overall quality of life.
- Our youth benefit from quality after-school programming.
- Basic needs must be met for individuals, couples, and families to ensure quality of life.

Our annual fundraising event, Evening with Friends, will be held at the Shoreview Community Center on May 15, 2025. This is a time for donors to gather in friendship and celebrate our accomplishments. Proceeds from the event are used to support grants awarded by the SCF to organizations in the areas of human services, arts and culture, historical preservation, recreation, and places for reflection and relaxation.

Stay tuned for a new and improved SCF website and be sure to "like" our Facebook page.

You may donate to SCF at any time by scanning the QR code or by sending a check to our NEW mailing address:

Shoreview Community Foundation, 4600 Victoria Avenue N., Shoreview, MN 55126.

Donate Today!



TAKE ACTION NOW - ASH TREE REMOVALS

Do you have an ash tree on your property? Make a plan for removal of ash trees on your property if you have not been treating them. Property owners are asked to remove untreated ash trees on private property by the end of 2025.

Ash trees are infested by emerald ash borer (EAB), an invasive insect that attacks and kills ash trees native to Minnesota. Treating ash trees with an insecticide trunk injection is effective when it is started early as a preventative strategy. Many trees that have not already been treated are too heavily infested for treatment.

Contact licensed tree companies for estimates on tree removal. All tree companies doing work in the city are required to have a city license. Licensed contractors have provided proof of liability insurance. The city does not have funding to assist with tree removals on private property.

shoreviewmn.gov/trees





PARKS & RECREATION



Register for spring programs in CivicRec!

shoreviewmn.gov

Visit shoreviewmn.gov/parks-rec

Click "register online"

Select Login/Create account on your desktop or mobile device

Log in to your SVMN account*

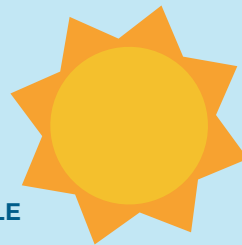
**Community center members account created at sign up*

POLICIES

- 10% fee for cancellations made 7 days or more before class start date
- 25% fee for cancellations made 6 days or less before class start date
- Programs/events under \$10 are non-refundable
- No refunds on or after class start date or for missed classes
- Scholarships available for Shoreview residents; restrictions apply

Registration Schedule

Registration begins at 8 am



SPRING REGISTRATION SCHEDULE

Tuesday, March 4: Shoreview residents

Thursday, March 6: Annual community center members

Friday, March 7: General registration

CONTACT US

Parks & Rec

Monday – Friday: 8 am – 4:30 pm

651-490-4750

recreation@shoreviewmn.gov



WEATHER UPDATES

call 651-490-4765



Membership Rates & Benefits



MEMBERSHIP FEES

Annual Membership¹ (with one year membership agreement)

	FAMILY	DUAL	ADULT	YOUTH/SENIOR
Rate	\$1,010	\$860	\$600	\$480
Shoreview resident*	\$740	\$660	\$440	\$370
Military*	\$930	\$790	\$545	\$445
Military resident*	\$700	\$620	\$415	\$350

Annual Membership Billed Monthly¹

(with one year membership agreement)

	FAMILY	DUAL	ADULT	YOUTH/SENIOR
Rate	\$91.75	\$77.75	\$54.75	\$48.25
Shoreview Resident*	\$71.50	\$63.25	\$42.25	\$35.75
Military*	\$83.50	\$71	\$50	\$44.25
Military Resident*	\$67	\$59	\$40	\$33

¹ \$100 early cancellation fee. * Sales tax is included in price.

Seasonal Membership (Three consecutive months)

	FAMILY	DUAL	ADULT	YOUTH/SENIOR
Rate	\$377	\$357	\$252	\$195
Shoreview resident*	\$282	\$260	\$184	\$153

* ID required for military and resident rates.

Military rate not available for seasonal memberships

- Seniors: 65 & older
- Youth: 17 & younger
- Dual membership is two people living in the same household. Family is two adults plus dependent children under 23 living in same household. Proof of dual and family member qualification is required.
- Fees are subject to change.
- We accept payment by any major debit/credit card.

Annual membership includes unlimited use of:

- Fitness center (14 years and older)
- Shoreview waterpark, including Tropics and Bamboo Bay
- Indoor playground (Ages 1 – 10)
- Indoor track (14 years and older)
- Basketball courts
- Whirlpool (18 years and older)
- Members registration day and the ShoreViews home mailing
- Member only waterpark hours: Saturdays, 10 am - 1:30 pm Bamboo Bay, noon - 1:30 pm Tropics





General Information and Hours

Hours and rates are subject to change. Visit shoreviewmn.gov for the latest information.

DAILY RATES:

All guests must pay admission; this includes non-swimming guests and adults in the playground and gymnasium. Children 12 and under must be supervised by an adult while in the community center.

DAILY PASS	RATE	SHOREVIEW RESIDENT	MILITARY	MILITARY RESIDENT
Adult (18 and older)	\$14.00	\$10.50	\$11.25	\$9.75
Youth (1 to 17)	\$12.50	\$9.25	n/a	n/a
Seniors (65 and older)	\$12.50	\$9.25	\$10.75	\$8.75

INDOOR PLAYGROUND ONLY	RATE	SHOREVIEW RESIDENT
All visitors	\$6.75	\$6.25

All playground visitors must pay admission; this includes supervising adults.

COUPON BOOKS (10 DAILY PASSES)	RATE	SHOREVIEW RESIDENT
Adult	\$126.00	\$94.50
Youth/Senior	\$112.50	\$83.25
Indoor Playground	\$60.75	\$56.25

SENIOR TRACK DISCOUNT (65 & OLDER)	RATE	SHOREVIEW RESIDENT
Track use only		
Punch card (includes 10 visits)	\$56.00	\$46.00

Fees are subject to change. We accept any major debit/credit card.
All rates above include sales tax. Visit shoreviewmn.gov for updates.

POOL HOURS

The waterparks, lap swim, and open swim are available at various times throughout the week.

See the service desk for a schedule or visit shoreviewmn.gov/waterpark.



KIDS CARE

Child care is available for community center customers.

See page 24 for details.



DROP-IN VOLLEYBALL

Sunday, 8 – 10 am
Tuesday & Thursday, noon – 1 pm

No volleyball on March 25 & 27, April 20



Building Hours



CALL FOR MORE INFORMATION

Community center	651-490-4700
Recreation programs (classes)	651-490-4750
Rental information	651-490-4790
Pool rental information	651-490-4780
City information	651-490-4600

shoreviewcommunitycenter.com



HOURS

Children 12 & under must be supervised by an adult while in the community center.

DAYS	COMMUNITY CENTER	PLAYGROUND
Monday – Friday	5 am – 9 pm	8 am – 8 pm
Saturday	6 am – 8 pm	noon – 7 pm
Sunday	6 am – 8 pm	noon – 6 pm

HOLIDAY HOURS

DATES	COMMUNITY CENTER	PLAYGROUND
April 20	6 am – noon	8 am – noon
May 26	5 am – noon	8 am – noon

POOL HOLIDAY HOURS

DATES	TROPICS	BAMBOO BAY
April 20	closed	closed
May 26	closed	closed

View the full pool schedule at: shoreviewmn.gov/waterpark



Summer Saturday Package

Book your
2025
event now



Package includes:

- Shoreview room & deck
- Haffeman pavilion
- Garden space

Saturdays, May–September

Shoreview resident \$2,100

Non-residents \$2,310

\$1,000 refundable reservation deposit

SHOREVIEW ROOM

- Maximum capacity of 300 people
- Choose your own licensed caterer
- Alcohol service available with in-house provider
- \$1,000 refundable reservation deposit

DAYS	RATE	SHOREVIEW RESIDENT
Sun – Thurs	\$1,050	\$895
Friday	\$1,540	\$1,365
Saturday	\$1,910	\$1,680

WEDELL COMMUNITY ROOM

- Maximum capacity of 250 people
- Choose your own licensed caterer
- Alcohol service available with in-house provider
- \$1,000 refundable reservation deposit

DAYS	RATE	SHOREVIEW RESIDENT
Sun – Thurs	\$750	\$620
Friday	\$1,160	\$995
Saturday	\$1,445	\$1,265

HALF COMMUNITY ROOM

- Available Sunday – Thursday
- Maximum capacity of 100 people
- \$500 refundable reservation deposit

DAYS	RATE	SHOREVIEW RESIDENT
Sun – Thurs	\$445	\$410

*Additional fees may apply
Fees are subject to change*



Exclusive Parties



BAMBOO BAY EXCLUSIVE

- Exclusive access to Bamboo Bay waterpark and cabanas
- Admission included for up to 50 people
- 30 days notice required
- \$175 refundable damage deposit

Day	Time
Friday	5 – 7:30 pm
Sunday	9 – 11:30 am

Friday Bamboo Bay Exclusive parties have the option of adding on use of Tropics Waterpark for an additional \$125

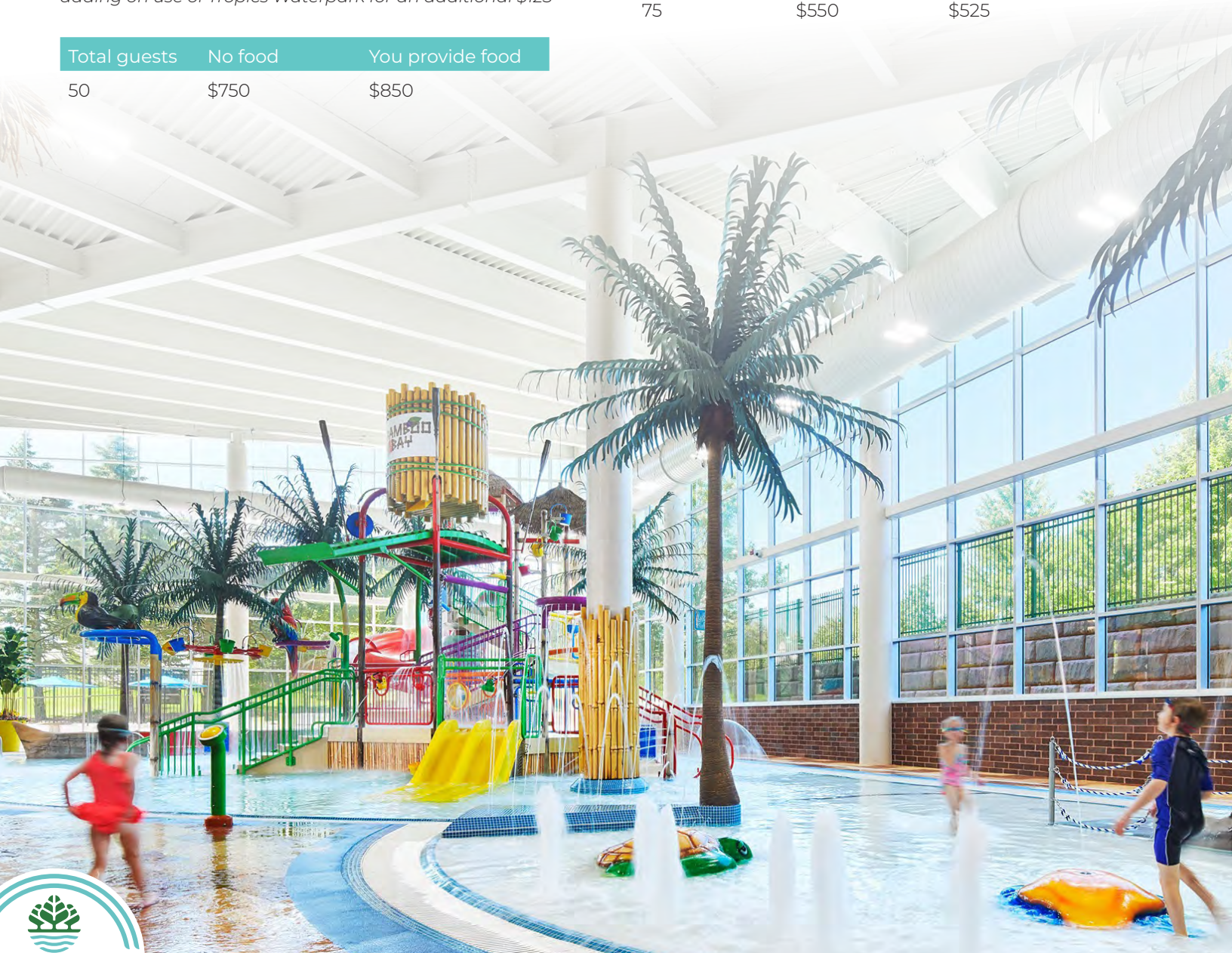
Total guests	No food	You provide food
50	\$750	\$850

INDOOR PLAYGROUND EXCLUSIVE

- Exclusive access to the Indoor Tropical Adventure playground and party space
- Admission included for up to 75 people, table seating for 12 guests
- Bring your own food and cake
- \$100 refundable damage deposit

Days	Time
Saturday & Sunday	9 am – noon

Total guests	Rate	SV Res
75	\$550	\$525



POOLSIDE CABANA

- Semi-private space, located in Bamboo Bay waterpark
- Seating for 16 guests
- Includes 16 admission wristbands (Sat – Sun)
- \$100 refundable damage deposit

Day	Duration	Rate	Shoreview resident
Sat – Sun	3 hours	\$450	\$400
Tues/Thurs*	2 hours	\$240	\$200

*Bamboo Bay access only

POOLSIDE PARTY ROOM

- Private room, located downstairs
- Seating for 32 guests
- Includes 32 admission wristbands
- \$100 refundable damage deposit

Day	Duration	Rate	Shoreview resident
Sat	3 hours	\$625	\$575
Fri & Sun	2 hours	\$565	\$515

PLAYGROUND PARTY AREA

- Semi-private space, located in playground
- Seating for 12 guests
- Includes 12 admission wristbands (playground-only)
- \$100 refundable damage deposit

Day	Duration	Rate	Shoreview resident
Any	3 hours	\$235	\$215



ACTIVITY ROOM

- Private room, located upstairs
- Large windows with natural lighting
- Seating for 36 guests
- Includes 24 admission wristbands (Fri – Sun)
- Adjacent rooms available for extra fee
- \$100 refundable damage deposit

Day	Duration	Rate	Shoreview resident
Mon – Thurs	2 hours	\$100	\$90
Fri	2 hours	\$325	\$275
Sat – Sun	3 hours	\$500	\$450

MEETING ROOMS 1 – 3

- Private room, located upstairs
- Seating for 20 guests
- Includes 16 admission wristbands (Fri – Sun)
- Adjacent rooms available for extra fee
- \$100 refundable damage deposit

Day	Duration	Rate	Shoreview resident
Mon – Thurs	2 hours	\$75	\$60
Fri – Sun	3 hours	\$350	\$300

MEETING ROOM 4

- Private room, located upstairs
- Seating for 20 guests
- Not available for birthday parties
- \$100 refundable damage deposit

Day	Duration	Rate	Shoreview resident
Sun – Fri	2 hours	\$100	\$90

All weekday rentals that fall on a Mounds View no school day are weekend rental prices and times.

Admission is included with birthday party options. Visit shoreviewmn.gov to learn more or call 651-490-4790 to book your party.



HAFFEMAN PAVILION & GARDEN SPACE

- Permanent picnic tables seat up to 100 guests
- Located in Commons Park, next to the community center
- Indoor room with air conditioning, restrooms, and fireplace and additional seating for up to 30 guests
- Decorative pond with fountain and benches
- Ideal space for ceremonies, graduation parties, and family reunions
- \$500 refundable damage deposit

Days	Month	Rate	SV Resident
Fri or Sun	May – Sept	\$575	\$525
Mon – Sun	Mar, Apr, Oct, Nov	\$460	\$420

PARK SHELTERS

- Small shelters are available at most Shoreview parks. The daily rental fee is \$65.

Learn more at shoreviewmn.gov.

Park shelter	Capacity
Bucher	4 tables; up to 24 people
Lake Judy	2 tables; up to 15 people
McCullough	2 tables; up to 15 people
Shamrock	5 tables; up to 40 people
Sitzer	4 tables; up to 32 people
Commons	4 tables; up to 24 people

The following parks are owned and operated by Ramsey County Parks & Recreation.

For more information call 651-748-2500 or visit ramseycounty.us.

- Island Lake County Park
- Lake Owasso County Park
- Snail Lake County Park
- Turtle Lake County Park

Additional fees may apply — fees are subject to change



Fitness Programs



GROUP X CARDS

- Good for all fitness classes
- Class schedule is available online and at the community center
- Purchase at the parks & recreation desk or by phone at 651-490-4750 during office hours (Monday – Friday, 8 am – 4:30 pm)
- You can reload your Group X Card in person or by phone at 651-490-4750
- Go online to shoreviewmn.gov/fitness to reserve your spot using SignUpGenius today!

QUANTITY	REGULAR	ANNUAL MEMBER	RESIDENT	RESIDENT ANNUAL MEMBER
5 Classes	\$56	\$39	\$50	\$35
10 Classes	\$107	\$75	\$98	\$69
25 Classes	\$263	\$184	\$239	\$167
50 Classes	\$503	\$352	\$456	\$319

- One Group X Card allowed per person
- Cards are non-refundable and non-transferrable
- Member discount applies to annual memberships only
One-time drop-in passes are available at the lower-level service desk the day of class
- SeniorFIT and Aqua Fitness do not need reservations

GROUP FITNESS CLASSES

View schedules online at shoreviewmn.gov/fitness

- Please check class schedule at the beginning of the month
- Refunds are issued for medical reasons only
- Membership is not required
- SeniorFIT classes are free with paid annual senior membership
- All classes are 50 to 60 minutes unless otherwise noted
- Classes with three participants or fewer are subject to change or cancellation
- Group fitness classes are great for all levels
- Find out which classes best suit your needs by calling the fitness coordinator at 651-490-4768

Call for information: **651-490-4750**

Group Fitness drop-in rate: Regular: \$12.50, SV Res: \$11.50



KIDS CARE

Kids Care provides a stimulating and safe environment for children 6 months to 12 years of age. Kids can explore and interact with other children while you enjoy the community center's amenities.

- First come, first served
- Max 2 hour stay (must stay in building)
- Kids Care phone number: 651-490-4763

HOURS

Monday – Saturday: 8 am – 12:30 pm
Monday – Thursday: 4 – 8 pm
Friday: 4 – 7 pm

If there are no kids in the room 30 minutes prior to close, Kids Care will close early.

CLOSED

May 26, 2025

Cost: To use Kids Care you must purchase a punch card or pay a \$3 drop-in fee at the service desk. \$2 per hour rate for punch cards. Punch cards are non-refundable

Where to buy: the parks and recreation desk, community center sales office, or online

Ages: 6 months to 12 years old

Punch Card:

10 hours: \$20
25 hours: \$50
50 hours: \$100



GROUP FITNESS CLASSES

Class offerings vary by season. Check the current group fitness schedule online.

- 60/40
- Barre principle
- The resistance workout
- Step cardio
- Dance jam
- Fundamental combo
- H.I.I.T. (High Intensity Interval Training)
- The Groove
- Kettlebell training
- Power strength
- Cycle rave
- Cycle training
- Total body workout
- Power pump
- Cardio kickboxing
- Zumba®

WATER FITNESS CLASSES

All water classes are held in the pool.

- The pool is between 3 1/2 and 4 1/2 feet deep
- All fitness levels are welcome
- The pool temperature is between 84 – 86 degrees
 - Aqua fit
 - SeniorFIT aqua exercise

Scan the code to view SeniorFIT class descriptions or visit online at shoreviewmn.gov.

MIND/BODY CLASSES

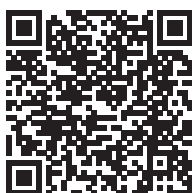
- Stretch and balance
- Yin/restorative yoga
- Yoga basics
- Hot yoga — Class temp range is 80 – 90 degrees.
- Fitness Pilates
- Power yoga
- Yoga/Pilates fusion
- Yoga sculpt



SENIORFIT CLASSES

SeniorFIT classes are free to annual senior members. If you are not an annual senior member, you may purchase a Group X Card or a drop-in pass. See page 23 for Group X Card information. All fitness levels are welcome.

- SeniorFIT chair yoga
- SeniorFIT strength training
- SeniorFIT aqua exercise
- SeniorFIT let's move



Scan the code to view SeniorFIT class descriptions or visit online at shoreviewmn.gov

WINTER SESSION : APRIL 1 – MAY 31

Registration is not required.

CLASS/INSTRUCTOR	DAY	TIME
Chair yoga: Beth	Monday	8:30 am
Aqua exercise: Fran	Monday	9 am
Strength training: Nancy/Deb	Tuesday	8:30 am
Chair yoga: Scott	Tuesday	2 pm
Chair yoga: Gretchen	Wednesday	8:30 am
Aqua exercise: Fran	Wednesday	9 am
Let's move: Nancy/Perry	Thursday	8:30 am
Strength training: Denise	Friday	8:30 am
Chair Yoga: Scott	Friday	9:30 am

COMMUNITY CENTER MEMBER EQUIPMENT ORIENTATION (INDIVIDUAL OR GROUP)

Get introduced to fitness center equipment and learn how to utilize strength and cardio equipment safely. The schedule and sign-up sheet for equipment orientations is located at the fitness center desk.

The first orientation for members ages 14+ is free. For more information call 651-490-4768.

AGES	COST
14+	Free to members



PERSONAL TRAINING

- Personal training comes in packages of 3, 6 and 12 sessions
- All sessions expire one year from the date of purchase
- Trainers help you set realistic goals and determine safe strategies to achieve them
- Trainers will customize a program to fit your ability and health
- Trainers monitor progress and adapt your routine for consistent improvement
- Learn fitness principles and correct form to aid in progress and prevent injuries

INDIVIDUAL PERSONAL TRAINING

SESSIONS	REGULAR	RESIDENT
3	\$250	\$226
6	\$474	\$426
12	\$897	\$808
24	\$1,697	\$1,489

BUDDY PERSONAL TRAINING

Two participants train together and each pay the fee below.

SESSIONS	REGULAR	RESIDENT
3	\$192	\$172
6	\$357	\$320
12	\$675	\$608





Adult Programs

SHOREVIEW AREA PICKLEBALL CLUB

Name tag with 2025 sticker must be worn for proof of membership. The club will email you with details about etiquette, name tag pick-up, clinics, and more. Verify and update your email address.

The season runs May – October, weather permitting. Pickleball club membership does not include community center or Island Lake School drop-in play.

Club benefits

- Dedicated play time
- Balls and nets
- Free beginner instruction*
- Organized ladder tournaments*
- Name tag
- End of season get-together
- Tournaments and prizes

AGE	LEVELS	LOCATION	COURT HOURS	CLUB COST
18+	Beginner & social players	Commons Park*	Mon – Fri, 8:30 – 11 am Tues & Thurs, 6 – 8 pm	\$27; \$20 SV Res
18+	Competitive intermediate & advanced	Bobby Theisen Park**	Mon, Wed, Thurs, Fri 8:30 – 11 am	\$27; \$20 SV Res

***Bobby Theisen Park is currently under construction but courts are scheduled to open during the 2025 season. The courts at Commons Park will be available for competitive and intermediate players on Mondays, Wednesdays, and Fridays from 6 – 8 pm until construction is complete.*

DROP-IN PICKLEBALL

All are welcome! You do not need to be a member of the Shoreview Area Pickleball Club for indoor drop-in play.

Pickleball punch card: cost \$50 (11 visits)

- Punch cards are good for both drop-in locations.
- Available for purchase at the parks and recreation office

Office hours: Monday – Friday, 8 am – 4:30 pm

AGES	DATE & TIME	COST	LOCATION
18+	Mon – Fri, Oct 7 – April 2 8 – 11 am	FREE to SCC members, \$5 for non-members	community center
18+	Wednesdays, March 5 - April 30 5:30 – 9:30 pm	\$5 per person (cash only)	Island Lake Elementary





BALLROOM DANCE

Learn basic ballroom dance patterns to popular party & wedding music. We will focus on footwork, timing and dancing with a partner. No partner needed. Taught by renowned instructor Amy Hanson from Ballroom by Amy.

Location: community center

Registration deadline: March 25

AGE	DATE & TIME	COST
15+	Tues, April 1 – May 6 7:30 – 8:30 pm	\$36; \$33 SV Res

PRIVATE BALLROOM DANCE LESSONS

Sign up for lessons with Ballroom by Amy. Amy is ranked the top dance instructor in the country!

Lessons available on Mondays between 10 am - 3 pm. Additional times may be available. Contact

651-490-4714 to schedule and register.

Small Private Lesson

\$117; \$107 SV res

One, 45-minute lesson

Fee covers 1-2 people

Group Private Lesson

\$235; \$214 SV res

Two, 45 minute lessons

Fee covers 3-8 people

55+ HOUSING FAIR

Tuesday, April 29

1 - 3 pm

Community center

Free (no registration needed)

Get answers to the overwhelming question: do I move or age in place? Make a future housing plan for yourself or a loved one at the free 55+ Housing Fair.

Visit representatives from a variety of local senior living facilities, services that help you age-in-place, and other 55+ housing related companies.

Interested vendors call 651-490-4714.



Adult Programs



FREE TEN-MINUTE FUNCTIONAL BALANCE SCREENING BY OSI PHYSICAL THERAPY

Make an appointment for an in-person screening to measure your fall risk and identify areas to strengthen. Past participants are fans and recommend the evaluation to their friends. You can re-test to see your progress.

EVALUATE:

- Static and dynamic balance systems to establish fall risks
- Identify any areas that could benefit from focused strength training
- Identify simple assistive devices

Ten minute appointments available from 9 – 10 am. Register online or call 651-490-4750.

Location: community center

Registration deadline: one week before class

AGES	DATE & TIME	COST
50+	Tues, March 4	Free
50+	Tues, April 1	Free
50+	Tues, May 6	Free
50+	Tues, June 3	Free

Adult Program Newsletter

Sign up to receive a copy of our quarterly adult activities newsletter. It contains additional program offerings, interesting articles, and more. Call 651-490-4714 to join our mailing list.

Friends & Co!

(formerly Little Brothers - Friends of the Elderly) fosters friendships, connections, companionship and community. Call to participate in our services for older adults, as a volunteer, a supporter, or choose to do both, you will be joining an established, trusted, accepting, compassionate, connected community. Everyone's contributions matter and everyone is always welcome.

FriendsCo.org 612-721-1400



ALZHEIMER'S ASSOCIATION®

Helpline 24/7/365 • 800-272-3900

Dial 711 for a TRS operator

Helpline specialists and clinicians offer confidential support and information to people living with the disease, caregivers, families and the public.

Call: We are available in any language around the clock, at 800-272- 3900.

Visit Alz.org, for additional resources

Meals On Wheels

The Meals On Wheels program is available to eligible seniors and certified, disabled individuals (regardless of age) who live in Mounds View School

District 621. Hot, nutritious noon meals are delivered by volunteers Monday through Friday, except on holidays. For more information, call 651- 621-7950.



RAMSEY COUNTY

Senior LinkAge Line

800-333-2433

A free state-wide resource supporting older Minnesotans and their caregivers. Get connected to local resources, housing,

Medicare information, and free classes. Senior LinkAge line is a division of the MN Board on Aging; working to ensure that all Minnesotans can age and live well.



SENIOR LINKAGE LINE



DROP IN MAH JONGG

Bring your friends, National American Mah Jongg rule card, and tiles.. All levels welcome! If you don't have tiles the park and rec desk has a set you can check-out.

Location: community center

No registration required

AGES	DATE & TIME	COST
18+	Thursdays, 1 pm	Free

LEARN TO PLAY MAH JONGG

Retired teacher and avid Mah Jongg player, Tarri Lavine, will bring you into the world of Mah Jongg. Mah Jongg helps maintain good brain health, memory and opportunities to socialize. Mah Jongg is similar to Gin Rummy but played with tiles instead of cards. Tiles and handouts provided.

BEGINNER

Learn rules, strategies and etiquette while playing the game. The class will be taught using previous National Mah Jongg League cards.

ADVANCED BEGINNER

New Card! New Hands! New Strategies! Bring your new 2025 NMJL card or borrow one during class.

Location: community center

Registration deadline: one week before class

AGES	LEVEL	DATE & TIME	COST
18+	Beginner	Mon & Wed April 14 & 16 9 am – noon	\$88 \$80 SV Res
18+	Beginner	Tues & Thurs April 15 & 17 9 am – noon	\$88 \$80 SV Res
18+	Advanced Beginner	Mon & Wed April 28 & 30 9 am – noon	\$88 \$80 SV Res

MORNING MOVIE

Celebrate the Twins home opener with the beloved late 80's baseball movie filmed in Iowa (due to licensing we cannot publish the name). Join us in the community room for donuts, coffee, and a great movie.

Call 651-490-4750 for the title.

Register so we can plan refreshments.

Location: community center

Registration deadline: March 31

AGES	DATE & TIME	COST
18+	Thurs, April 3 10 am – noon	Free



500 CARD CLUB

MONDAYS AT NOON

Join us for cards and conversations

No partner required.

Located in the community center fireside lounge



Alzheimer's Speaks

Shifting Our Dementia Care Culture™

DEMENTIA CAREGIVER SUPPORT GROUP WITH RESPITE CARE

Find support in a facilitated support group led by a trained facilitator from Alzheimer's Speaks. In a nearby room your loved one can enjoy activities including: music therapy, movement, and balance. This program is possible thanks to a generous grant from the Shoreview Community Foundation. This group meets the last Wednesday of each month. Registration is requested but we understand that last minute changes happen.

AGES	DATE & TIME	COST
18+	Wed, March 26, 10 – 11:30 am	Free
18+	Wed, April 30, 10 – 11:30 am	Free
18+	Wed, May 28, 10 – 11:30 am	Free



AARP SMART DRIVER

Taught by AARP trained instructors, Smart Driver teaches safe driving techniques to help keep you and your loved ones safe on the road. Insurance discounts for those 55+. A refresher course is required every three years. Have your AARP member number ready for a registration discount. **The eight-hour course is no longer required.**

Location: community center
Registration deadline: one week before class

4-HOUR COURSE

AGES	DATE & TIME	COST
55+	Thurs, March 6 9 am – 1 pm	\$33; \$26 AARP member
55+	Tues, March 18 1 – 5 pm	\$33; \$26 AARP member
55+	Thurs, March 27 9 am – 1 pm	\$33; \$26 AARP member
55+	Tues, April 8 9 am – 1 pm	\$33; \$26 AARP member
55+	Tues, April 22 1 – 5 pm	\$33; \$26 AARP member
55+	Tues, May 6 5 – 9 pm	\$33; \$26 AARP member
55+	Wed, May 21 9 am – 1 pm	\$33; \$26 AARP member
55+	Wed, June 4 9 am – 1 pm	\$33; \$26 AARP member
55+	Tues, June 24 5 – 9 pm	\$33; \$26 AARP member



CLIMATE TALK WITH DR. MARK SEELEY

As a faculty member in the U of M's Dept of Soil, Water, and Climate Department from 1978 to 2018, Dr. Seeley participated in thousands of public speaking engagements, meetings, media interviews and person-to-person interactions where he shared his considerable knowledge of the critical relationship between climate and agricultural production.

Location: community center

Registration deadline: two days before class

BASIC METEOROLOGY

LEARN THE BASICS FROM THE EXPERT:

- How forecasts are created
- Tools and data
- Progress in forecasting the weather
- Our limitations
- Learn the best resources for you to get a forecast

AGE	DATE & TIME	COST
18+	Tues, March 11 1 – 2:30 pm	\$22; \$20 SV Res



CLIMATE CHANGE IMPACTS ON OUR NATIONAL PARKS

It's Earth Day and National Parks Week. Our National Park Service is over 100 years old. The NPS manages 411 sites, with some already being affected by changing climates. This is why the Department of the Interior drafted "A Climate Change Adaptation Plan" in 2014. Seeley discusses which of our National Park sites are being impacted by climate change, and what their future holds.

AGE	DATE & TIME	COST
18+	Tues, April 22 1 – 2:30 pm	\$22; \$20 SV Res

THE WEATHER OF D-DAY

Weather played a key role in the landings that took place 81 years ago. The invasion required a precise combination of weather, tides, and moonlight. They'd need clear skies and a full moon for air operations, calm seas and low winds for naval transport, and low tide for safe landing, exposing German beach obstacles. After intensive analysis, military planners said June 5 and June 7 were their best chance. But the weather wasn't cooperating, and the next suitable tides were two weeks away. A delay the Allies couldn't afford.

AGE	DATE	COST
18+	Tues, June 3 1 – 2:30 pm	\$22; \$20 SV Res



LEARN TO KNIT & LEARN TO CROCHET

Learn basic techniques to complete a small project or two. Bring a small scissors and zippered cloth bag.

Instructor will provide required materials the first night, \$10 for crochet, \$20 for knitting. Do not bring your own materials.

Location: community center

Registration deadline: one week before class

AGES	CLASS	DATE & TIME	COST
18+	Knit	Wed, April 9 - May 14 9 am – noon	\$40; \$36 SV Res
18+	Crochet	Thurs, April 10 - May 15 9 am – noon	\$40; \$36 SV Res





Adult Programs

PAINT WITH ME!

Adult and child painting class. See page 46 for more information.

BOB ROSS PAINTING CLASSES

Famous for encouraging everyone to try painting, Bob Ross's legacy lives on in these classes. There are no mistakes, just happy accidents. Experience painting the Bob Ross way with a landscape method certified instructor, Valarie Namen.

Ages 13 - 15 can register with a registered adult.

Location: community center

Registration deadline: one week before class

AGES	CLASS	DATE & TIME	COST
13+	Bird of paradise	Wed, April 16 6 – 8:30 pm	\$63; \$57 SV Res
13+	Mountain river	Sat, May 10 10 am – 2 pm	\$63; \$57 SV Res

EASY PAINTING

No experience necessary. Use easy to learn one-stroke painting with acrylics. Class includes step-by-step instruction and all supplies. You'll leave with your very own masterpiece!

Location: community center

Registration deadline: one week before class

AGES	PAINTING	DATE & TIME	COST
18+	Fun with watercolor circles	Mon, March 10 1 – 4 pm	\$48; \$44 SV Res
18+	Spring florals	Mon, April 14 1 – 4 pm	\$48; \$44 SV Res
18+	Dragonfly lake view	Mon, May 12 1 – 4 pm	\$48; \$44 SV Res
18+	Exploring watercolors	Mon, June 2 1 – 4 pm	\$48; \$44 SV Res

CREATING ART WITH MIXED MEDIA

Explore texture, color and creativity as you use epoxy, resin, alcohol inks, and other media to create unique pieces of colorful art. Registration fee includes all materials and instruction.

Location: community center

Registration deadline: one week before class

AGES	ARTWORK	DATE & TIME	COST
16+	Butterfly beauty, paint, glass and resin	Thurs, March 6 6 – 8 pm	\$63; \$58 SV Res
16+	Alcohol Ink coasters	Thurs, April 17 6 – 8 pm	\$63; \$58 SV Res
16+	Palm tree beach bliss paint, glass and resin	Thurs, May 15 6 – 8 pm	\$63; \$58 SV Res





Landmark Tours

Unforgettable Travel Experiences

LANDMARK TOURS TRAVEL SHOW

Join us for a free travel show with local travel partner, Landmark Tours.

Landmark Tours is a Minnesota-based, family-owned tour operator offering over 35 destinations each year. Their inclusive packages feature roundtrip airfare, upscale accommodations, and must-see attractions.

- Historic Trains of Colorado
- American West with Monument Valley
- Autumn in New England
- New Mexico with Santa Fe, Taos, Albuquerque Balloon Festival
- Iceland: Golden Circle & South Coast
- Italy: Cinque Terre, Tuscany, and Chianti
- Savannah, Charleston & Asheville

Location: community center
No registration needed

AGES	DATE & TIME	COST
18+	Thurs, May 8 1 – 2 pm	Free

Adult Programs



DAY TRIP TO: MINNESOTA ORCHESTRA, SØNDERGÅRD, FLITER AND MOZART

When Thomas Søndergård made his debut with the Minnesota Orchestra, Ingrid Fliter offered an elegant and playful interpretation of a Mozart piano concerto. The collaboration was electrifying.

This time, Fliter plays a different Mozart concerto on this program that includes a haunting elegy by Karim Al-Zand and the arresting Symphony No. 11 by Dmitri Shostakovich. This casual coffee concert offers free coffee and rolls in the hall prior to the show.

Location: meet at the community center
Registration deadline: April 10



AGES	DATE & TIME	COST
18+	Thurs, May 8 9:45 am – 2 pm	\$72

DAY TRIP TO: THE MUSEUM OF RUSSIAN ART AND LUNCH AT KRAMARCZUK'S

Enjoy a guided tour of the Museum of Russian art. The museum hosts an extensive collection of Soviet-era art including a lovely folk art collection. Additionally there are exhibitions by contemporary artists who have heritage from countries that were formerly part of the Soviet Union, like Ukraine. Following the tour we'll head to Kramarczuk's. Lunch is ordered and paid for on your own and not included in the price of the trip. Kramarczuk's only accepts credit cards - no cash.



Location: meet at the community center
Registration deadline: May 6

AGES	DATE & TIME	COST
18+	Tues, May 20 9:20 am – 1:45 pm	\$48



Swim Lessons

SHOREVIEW PARKS & RECREATION SWIM LESSONS

Our mission is to provide inclusive swim lessons for everyone. Our fun and imaginative approach to lessons will help you create a lifelong love of swimming. Pick your best learning environment — group lessons or private lessons. Parent-to-instructor communication is key to successful lessons. Our instructors love to teach and receive ongoing training.

Swim lesson policies

- We do not provide make-up swim lessons for any classes.
- Participants will be emailed specific program policies before the class starts.

Cancellation policies & fees

- 10% fee for cancellations made 7 days or more before class start date
- 25% fee for cancellations made 6 days or less before class start date
- Programs/events under \$10 are non-refundable

- No refunds on or after class start date or for missed classes.
- Scholarships available for Shoreview residents; restrictions apply

A note about swim lessons

- Due to high demand, private lessons are limited to 2 sessions per participant, per session.
- Swim lessons are not canceled if Mounds View School District cancels after school activities due to weather.
- Group classes with fewer than three registered participants will be canceled.
- Students are not allowed to swim before or after lessons.
- Students should use the bathroom and shower before entering the pool area.
- Staff aren't allowed to take students to the bathroom.
- If your child needs a quieter environment to learn, look at our Tuesday, Thursday, Saturday and Sunday lessons.
- The pool water temperature is kept at 85 degrees.

FREE SWIM LESSON CHECKS

Not sure of what level to register your child for? Reserve your time at shoreviewmn.gov If your child has been away for more than three months we recommend repeating the previous level.

DATE	TIME	COST
Sat, March 1	9 – 11 am	Free
Sun, March 2	9 – 11 am	Free
Sun, April 27	9 – 11 am	Free
Sat, May 3	9 – 11 am	Free
Sun, May 4	9 – 11 am	Free

PRIVATE LESSONS (PR) AGES 3 – ADULT

Private and semi-private lessons offer one-on-one training so you're able to learn at your own pace. Lessons are 30 minutes and available at set times.

NUMBER OF LESSONS	COST
6 lessons	\$167; \$152 SV Res

SEMI-PRIVATE LESSONS

- You must have two people at the same ability for a semi-private lesson
- Register one child for a regular private lesson then visit or call Parks & Rec 651-490-4750 to have the lesson switched to semi-private
- Rate listed per person

NUMBER OF LESSONS	COST
6 lessons	\$126; \$116 SV Res



**FREE
SWIM
CHECK**



Swim Lessons



One day a week for six weeks

SESSION	DAY	DATE	TIME
Session 1	Saturday	April 5 – May 17 <i>*no lessons April 19</i>	8:30 – 11:40 am
Session 2	Sunday	April 6 – May 18 <i>*no lessons April 20</i>	8:30 – 11:40 am
Session 1	Monday	April 7 – May 12	8:30 – 11:40 am
Session 1	Tuesday	April 8 – May 13	5 – 8 pm
Session 1	Wednesday	April 9 – May 14	5 – 8 pm
Session 1	Thursday	April 10 – May 15	5 – 8 pm

Two days a week for three weeks

SESSION	DAY	DATE	TIME
Session 2	Tues/Thurs	May 20 – June 5	5 – 8 pm

Lesson Rates

Group lessons	6 lessons	\$92; \$85 SV Res
Private lessons	6 lessons	\$167; \$152 SV Res
Semi-private*	6 lessons	\$126; \$116 SV Res

**Two participants of equal ability*

CUSTOM PRIVATE LESSONS

- Flexible scheduling with three months to complete after first lesson starts
- Option to reschedule with advance notification
- For more information contact the aquatic program supervisor at 651-490-4712
- Rate listed per person

CUSTOM PRIVATE LESSONS:

NUMBER OF LESSONS	COST
8 lessons	\$246; \$224 SV Res
6 lessons	\$221; \$202 SV Res
4 lessons	\$145; \$132 SV Res

CUSTOM SEMI-PRIVATE LESSONS:

NUMBER OF LESSONS	COST
8 lessons	\$177; \$161 SV Res
6 lessons	\$150; \$137 SV Res
4 lessons	\$108; \$98 SV Res

Visit shoreviewmn.gov/parks-rec for full swim lesson schedule



Swim Lessons



GROUP LESSONS

Group lessons will have one instructor to a maximum of four students.

- Group lessons are 40 minutes unless noted
- Parent/child lessons are 30 minutes

NUMBER OF LESSONS	COST
6 lessons	\$92; \$85 SV Res



PARENT/CHILD LESSONS PARENT/CHILD (PC 1)

AGES 9 MONTHS – 2.5 YEARS

- Enter/exit water with assistance
- Blow bubbles & submerge head
- Front/back float with guardian & instructor
- One adult must accompany each child in the water

PARENT/CHILD 2 (PC 2)

AGES 2 – 3.5

A parent accompanies their child in the water for the first few weeks and gradually reduces participation

- Enter/exit water independently
- Blow bubbles & submerge head
- Front/back float with instructor
- Front/back glides with assistance
- Front/back flutter kicking with instructor



BEGINNER

BEGINNER 1 (B1)

AGES 2.5 – 4

- Independent entry/exit
- Front/back floats with assistance — 3 seconds
- Front/back glides with assistance
- Front/back flutter kicking with support
- Front crawl arms with face in the water

BEGINNER 2 (B2)

AGES 3 – 5

- Independent front/back floats — 5 seconds
- Front/back glides
- Front/back flutter kicking
- Front crawl arms with flutter kick
- Rhythmic breathing

BEGINNER 3 (B3)

AGES 3 – 5

- Independent front/back floats — 8 seconds
- Independent front/back glides with flutter kicking
- Front/back flutter kicking - 8 yards
- Front crawl with rhythmic breathing with assistance

BEGINNER 4 (B4)

AGES 4 – 6

- Independent front/back floats — 10 seconds
- Independent front glide into front crawl
- Front/back flutter kicking — 1/2 length
- Front crawl with rhythmic breathing with assistance — 8 yards

YOUTH BEGINNER (YB)

AGES 6 – 12

New to swim lessons or haven't been in lessons for several years

- Independent front/back floats — 10 seconds
- Independent front/back glides with flutter kick
- Front/back flutter kicking — 1/2 length
- Front crawl arms with rhythmic breathing





INTERMEDIATE LESSONS

INTERMEDIATE 1 (I1)

AGES 5 – 7

- Front/back flutter kicking — 1/2 length
- Independent back glide with flutter kicking
- Flutter kick with rhythmic breathing — 1/2 length
- Front crawl with rhythmic breathing — 1/2 length

INTERMEDIATE 2 (I2)

AGES 5 – 13

- Front glide into front crawl — 8 yards
- Back glide into back crawl — 8 yards
- Front/back flutter kicking — 25 yards
- Back crawl with assistance — 8 yards
- Elementary backstroke kick — 1/2 length
- Tread water

INTERMEDIATE 3 (I3)

AGES 5.5 – 13

- Front crawl with rhythmic breathing — 25 yards
- Back crawl — 1/2 length
- Elementary backstroke — 1/2 length
- Tread water

INTERMEDIATE 4 (I4)

AGES 5.5 – 13

- Front crawl with open turn — 50 yards
- Back crawl — 25 yards
- Elementary backstroke — 25 yards
- Open turn — front
- Whip kick — 25 yards

Swim Lessons



ADVANCED LESSONS

ADVANCED 1 (A1)

AGES 6 – 13

- Front crawl with flip turns — 75 yards
- Back crawl with open turns — 50 yards
- Elementary backstroke — 25 yards
- Breaststroke — 25 yards
- Breaststroke whip kick
- Flip turns

ADVANCED 2 (A2)

AGES 6 – 13

- Front crawl with flip turns — 100 yards
- Back crawl with open turns — 75 yards
- Breaststroke with underwater pull out — 50 yards
- Breaststroke underwater pull out
- Dolphin kick — 25 yards
- Scissors kick — 25 yards

ADVANCED 3 (A3)

AGES 6 – 13

- Front crawl with flip turns — 150 yards
- Back crawl with open turns — 100 yards
- Breaststroke with underwater pull out — 75 yards
- Butterfly — 1/2 length
- Sidestroke — 25 yards



ADULT LESSONS

ADULT BEGINNER (AB)

AGES 18+

With the guidance of our swim instructors you will learn basic swimming skills in a safe environment while gaining confidence in the water. Participants will learn:

- Front/back floats
- Front/back kicking with support
- Breathing
- Comfort in water independently



Aquatic Programs

AQUA BUBBLES WATER DISCOVERY

Explore the water with your child in fun and imaginative ways to develop swim readiness skills through songs and games.

- One adult must accompany each child in the water
- 30 minutes of instruction; 15 minutes of play time

Location: community center

Registration deadline: one week before class

KIDS AGES	DATE & TIME	COST
1 – 3	Mon, April 7 10:15 – 11 am	\$16
1 – 3	Wed, May 14 10:15 – 11 am	\$16

FREE SWIM LESSONS AND WATER SAFETY

It's never too late to learn new skills and water safety tips that can help prevent drowning. We are offering a limited number of free group swim lessons to qualifying individuals.

Eligibility requirements:

- Shoreview residents
- WIC card or school district letter (must attach proof)

Location: community center

Registration deadline: one week before class

AGES	DATE	TIME	COST
3 – 4	Sat, June 14, 21, and 28	9 – 9:45 am	Free, SV Res only
5 – 6	Sat, June 14, 21, and 28	9 – 9:45 am	Free, SV Res only
7 – 8	Sat, June 14, 21, and 28	10 – 10:45 am	Free, SV Res only
9 – 12	Sat, June 14, 21, and 28	10 – 10:45 am	Free, SV Res only

SNORKELING

Learn the basics of snorkeling while discovering the underwater world. A variety of swimming abilities are encouraged to join us, but basic swimming skills are needed.

Equipment provided

Location: community center

Registration deadline: one week before class

AGES	DATE & TIME	COST
N/A	Sat, May 10 10 – 11 am	\$31; \$28 SV Res



Aquatic Programs

INTRODUCTION TO MERADVENTURES

Participants will learn how to:

- Swim with your mermaid tail
- Swim like a mermaid and perfect your dolphin-kick technique

Prerequisites:

- Front and back float independently - 10 seconds
- Roll from front to back and back to front
- Front crawl with rhythmic breathing - 8 yards

Mermaid tails and monofins provided.

Location: community center

Registration deadline: one week before class

AGES	DATE & TIME	COST
7-12	Sat, March 22 9 - 10 am	\$31; \$28 SV Res



MERADVENTURES FOR ADULTS

Create an unforgettable experience with your friends. Participants will learn how to:

- Swim with your mermaid tail
- Swim like a mermaid and perfect your dolphin-kick technique

Mermaid tails and monofins provided.

Location: community center

Registration deadline: one week before class

AGES	DATE & TIME	COST
18+	Sat, April 26 10 - 11 am	\$31; \$28 SV Res

MERADVENTURES WITH MOM

Create a lifelong memory with your child to celebrate mother's day under the sea with games, challenges, and much more.

We will provide a snack and fun craft to remember your under the sea adventure during the first 30 minutes.

Mermaid tails and monofins provided.

Location: community center

Registration deadline: one week before class

AGES	DATE & TIME	COST
7+	Sun, May 4 10 - 11:15 am	\$47/pair



Aquatic Programs



BOATING SAFETY

Successful completion of this course meets the requirements for a watercraft operator's permit and may allow you to receive a discount on your insurance. This course is taught by instructors from the U.S. Coast Guard Auxiliary.

Topics include:

- Boating law
- Safe boating and safety equipment
- Navigation
- Trailering, storing and protecting your boat
- Hunting and fishing, water-skiing, and river boating

Location: community center

Registration deadline: one week before class

DATE & TIME	COST
Sat, May 17 8 am – 4 pm	\$50/person; \$25 for youth with a registered adult

BSA FIRST AID MERIT BADGE

Scouts learn about:

- Care for an injured or ill person until professional medical care is available
- Provide immediate care and help someone who's hurt or ill
- Help prevent infection and serious blood loss



Scouts must provide the First Aid Merit Badge pamphlet and certification card.

Location: community center

Registration deadline: one week before class

AGES	DATE & TIME	COST
11+	Sat, March 29 8 – 11:30 am	\$76; \$73 SV Res

BSA SWIMMING MERIT BADGE

Scouts learn about:

- Safety when swimming & diving
- How swimming can contribute to overall fitness and health
- Gain some basic competitive swimming skills



Scouts must provide the Swimming Merit Badge pamphlet and certification card.

Location: community center

Registration deadline: one week before class

AGES	DATE & TIME	COST
11+	Thurs, April 10 5:30 – 8 pm	\$57; \$52 SV Res

Note: all deep-water components will not be completed in this course

BSA LIFESAVING MERIT BADGE

Prerequisite: completed Scouts BSA Swimming Merit Badge. Scouts must provide the Lifesaving Merit Badge pamphlet and certification card.

Scouts learn how to:

- Assist those involved in water accident
- Knowledge in rescue techniques
- Perform and judge when and how to act in an emergency.



Location: community center

Registration deadline: one week before class

AGES	DATE & TIME	COST
11+	Thurs, May 22 5 – 8:30 pm	\$76; \$73 SV Res

Note: all deep-water components will not be completed in this course





SPRING BREAK TROPICAL PUZZLE PALOOZA!

Grab your tropical shirts, flip flops, and spend a fun-filled tropical themed evening racing to finish a 500 piece puzzle. Teams of up to four people.

Time based rewards for those in tropical themed attire. Door prizes, and prizes for the three fastest teams.

Location: community center
Registration deadline: March 13

THURS, MARCH 27
6-8 PM

Check-in starts at 5:30 pm

\$30
SV RES

\$33

AGES
6+



BUNNY HOP TRAIL

Hippity hop over to Bucher Park and bring a basket to gather eggstra special treats. Along the way, the entire family can visit with the bunny and participate in fun activities and interact with barn yard animals in the petting zoo. Tickets must be purchased by those participating in the events.

Location: Bucher Park

Registration deadline: April 8

AGES	DATE & TIME	COST
Recommended 10 and under	Sat, April 12 10 am – noon	\$15

BAMBOO BAY EGG HUNT

The bunny will be hiding eggs for you to find in the Bamboo Bay pool area! Each child will be given an Easter bag of goodies. After the egg hunt is completed participants will be able to swim in Bamboo Bay. Don't forget your swimsuit & towel! No walk-ins accepted.

Location: community center

Registration deadline: one week before event

AGES	DATE & TIME	COST
7 and under	Sun, April 6 9 – 11 am	\$9 adult: \$15 child

SPRING ROYAL TEA

Join us at the Spring Royal Tea Party! Your afternoon will consist of crafts, a special appearance by a princess, storytelling, and refreshments. Come in your favorite princess look and don't forget your camera! Children must be accompanied by an adult. Tickets must be purchased by each individual attending. Pre-registration required. No walk-ins accepted.

Location: community center

Registration deadline: May 14

AGES	DATE & TIME	COST
Recommended 10 and under	Sun, May 18 3 – 4:30 pm	\$15



SPRINGFEST

CELEBRATING EARTH DAY

Sunday, April 27

Events from 2 - 5 pm

Haffeman Pavilion & lower parking lot

Free to attend

- Parking lot sale
- Community groups
- Music
- Food truck
- Kids activity



BARK IN THE PARK

Thursday, May 8, 4 - 7 pm

Shamrock Park, free event

- Music
- Dog exhibits
- Vendor booths
- Food truck and more!

All friendly, well-behaved leashed dogs are welcomed!



GARAGE STYLE PARKING LOT SALE

Need to have a garage sale but you don't have space? Purchase a stall (two parking spaces) and set up your own garage-style sale in the lower level community center parking lot. Bring your own table, chairs, cash box with change (or e-payment). Event takes place rain or shine! This is part of Shoreview's Springfest!

- 12:30 pm Set up begins
- 2 - 5 pm Sale
- 5 - 6 pm Clean up
- Tents/canopies are allowed

**APRIL
27**

Location: Lower level parking lot of community center

Registration deadline: April 17

AGE	DATE & TIME	COST
18+	Sun, April 27, 2 - 5 pm	\$22: \$20 SV Res



FAMILY WATER SAFETY DAY

SUNDAY, MAY 18 | 9 AM – NOON

COMMUNITY CENTER – NO REGISTRATION REQUIRED

The City of Shoreview has partnered with Abby's Hope and Ramsey County Sheriff's department to host a water safety camp to provide education on water safety. This event is a one-day educational water safety camp where children and adults will learn:

- Water safety
- Proper life jacket fitting
- Water rescue tips
- Parent water tips
- Boating regulations
- Beach and pool safety
- Tour rescue vehicles and more!

**ALL
AGES**

FREE

Free life jackets to attendees while supplies last



SHOREVIEW
Farmers Market



Now accepting vendors for the 2025 season
Visit our website for the application.

Located in the lower level parking lot at the
community center

Farmers market runs Tuesdays

June 3 - August 26, 3 – 7 pm

September 2 - October 14, 3 – 6pm

ADOPT-A-PARK

Parks are a critical component of Shoreview's great quality of life. Volunteer today and get involved in your community to help keep our parks clean and safe.

- Volunteers are asked to pick up litter and report any concerns noticed at the park
- Park adoption period runs May - October, with a 2-year commitment

To learn more & apply visit
shoreviewmn.gov/parks or call 651-490-4750

Open to Shoreview residents only



kidscorner preschool



COMMUNITY CENTER AMENITIES



School year of: September 8, 2025 – May 21, 2026

Kids Corner Preschool offers full-day prekindergarten preparedness classes and half-day preschool classes. Located inside the community center, our programs focus on social, emotional, physical, and cognitive learning. Our goal is to make sure all students feel welcomed, have fun, and develop a passion for lifetime learning.

- A \$100 non-refundable fee is required during registration.
- Full-day classes' first week of tuition is required at the time of registration
- Half-day classes' first month of tuition is required at the time of registration
- All students must be toilet-trained

Cancellation policy:

- Full-day: cancel before June 1, refunded half of the first weeks tuition
- Half day: cancel before June 1, refunded half of the first months tuition
- No refunds after June 1

Calendar follows Mounds View School District 621 non-school days.

REGISTER NOW!



FULL-DAY PREKINDERGARTEN CLASSES: 3 – 5 YEARS OLD

Must turn 3 by August 1, 2025

Kindergarten readiness classes are designed to develop structure, skills, and create a strong foundation for kindergarten.

- **Skills work:** reading, writing, math, fine motor skills, social and emotional learning, and more.
- **Enrichment activities:** large motor activities, language, art, STEM, music, outdoor and nature play, and more.
- Before and after school options with an additional cost
- Daily snacks
- Lunch is not provided

FULL-DAY CLASS OPTIONS

DAYS OF THE WEEK	TIME	WEEKLY FEE
Mon – Fri	9:30 am – 3:30 pm	\$260; \$240 SV Res
Mon, Wed, & Fri	9:30 am – 3:30 pm	\$156; \$141 SV Res
Tues & Thurs	9:30 am – 3:30 pm	\$112; \$120 SV Res

HALF-DAY PRESCHOOL CLASSES

Half-day classes are a great option to introduce your child to a structured program or first time experience in a classroom setting. The classes focus on the beginner stages of learning and socialization in a group environment.

- **Beginner skills work:** letters, numbers, colors, patterns, shapes, days of the week, social and emotional learning, fine motor skill development and more.
- **Enrichment activities:** large motor activities, language, art, STEM, music, outdoor and nature play, and more.
- Daily Snack

2½ – 3 years old: must be 3 by May 31, 2026

DAYS OF THE WEEK	TIME	MONTHLY FEE
Mon	9:30 am – 11 am	\$95; \$85 SV Res
Fri	9:30 am – 11 am	\$95; \$85 SV Res

3 – 4 years old: must be 3 by September 1, 2025

DAYS OF THE WEEK	TIME	MONTHLY FEE
Tues & Thurs	9:30 am – 12 pm	\$220; \$192 SV Res

BEFORE AND AFTER SCHOOL EXTENDED DAY OPTIONS: FULL-DAY CLASSES ONLY

Sign up for morning and/or afternoon options. Must sign up for the amount of days your child is attending

DAYS OF THE WEEK	AM/PM OPTIONS	WEEKLY AM FEE	WEEKLY PM FEE
Mon – Fri	7:30 – 9:30 am 3:30 – 5:30 pm	\$32.50; \$30 SV Res	\$32.50; \$30 SV Res
Mon, Wed, & Fri	7:30 – 9:30 am 3:30 – 5:30 pm	\$19.50; \$18 SV Res	\$19.50; \$18 SV Res
Tues & Thurs	7:30 – 9:30 am 3:30 – 5:30 pm	\$13; \$12 SV Res	\$13; \$12 SV Res



MUSIC TOGETHER

Sing, laugh, move and learn along with your baby, toddler or preschooler in these award-winning classes. The little ones love the delightful, engaging classes and the caregivers love helping their children grow into confident, life-long music makers.

Participants receive a CD, a code to download the music using our free 'Hello Everybody' app, and illustrated songbook and parent education materials. Infants under 8 months attend at no cost with a paid sibling.

Try a free demo class to see if this program is a good fit for your family.

Ages: 0 – 5

Location: community center

Registration deadline: one week before class

FREE DEMO CLASSES

Location: community center

Registration deadline: March 20

CLASS NAME	DATE & TIME	COST
Music TogetherDemo	Wed, March 19 9:30 – 10:15 am	Free
Music Together Demo	Sun, March 23 4:30 – 5:15 pm	Free

MUSIC TOGETHER

Location: community center

Registration deadline: one week before class

CLASS NAME	DATE & TIMES	COST
Music Together	Tues, April 1 - June 3 9:30 – 10:15 am	\$199; \$119 additional sibling
Music Together	Tues, April 1 - June 3 10:30 – 11:15 am	\$199; \$119 additional sibling
Music Together	Wed, April 2 - June 4 9:30 – 10:15 am	\$199; \$119 additional sibling
Music Together	Wed, April 2 - June 4 10:30 – 11:15 am	\$199; \$119 additional sibling
Music Together	Thurs, April 3 - June 5 9:30 – 10:15 am	\$199; \$119 additional sibling
Music Together	Sun, March 30 - June 8 <i>No class April 20</i> 4:30 - 5:15 pm	\$199; \$119 additional sibling
Music Together	Sun, March 30 - June 8 <i>No class April 20</i> 5:30 – 6:15 pm	\$199; \$119 additional sibling



RHYTHM KIDS

Students will learn to compose, choreograph, and conduct as they play with a variety of musical instruments: West African drums, percussion instruments, along with their own voices and bodies. While they are having fun, they'll be refining focus, dexterity, coordination, and rhythm - all things they'll use every day for the rest of their lives.

Parents or caregivers are invited to participate along with their child in class but their attendance is not required.

FREE DEMO CLASSES

Location: community center

Registration deadline: March 20

AGES	DATE & TIME	COST
5 – 8	Sun, March 23 3:30 – 4:15 pm	Free

RHYTHM KIDS

Location: community center

Registration deadline: one week before class

AGES	DATE & TIME	COST
5 – 8	Sun, March 30 - June 8 <i>No class April 20</i> 3:30 – 4:15 pm	\$199; \$119 additional sibling



WISH UPON A BALLET: TINKER BELL

Wish Upon a Ballet is a dance program for children that incorporates popular children's stories as well as ballet stories to create a dance class that is more than ballet steps. Come join the fun! Students will need ballet shoes and comfortable clothes they can move around in.

Location: community center

Registration deadline: March 10

AGES	DATE & TIME	COST
3 – 6	Sun, March 16 - May 18 <i>No classes April 20 and May 11</i> 2 – 2:45 pm	\$116; \$106 SV Res

WISH UPON A BALLET AND TAP: TINKER BELL

This program offers the same curriculum as our Wish Upon a Ballet program with the added fun of tap dancing! An introduction to the movements and vocabulary of these disciplines are taught with the help of musical instruments, parachutes and scarves. Students will develop poise, strength and flexibility.

Ballet and tap shoes are required.

Location: community center

Registration deadline: March 10

AGES	DATE & TIME	COST
4 – 7	Sun, March 16 - May 18 <i>No classes April 20 and May 11</i> 2:45 – 3:30 pm	\$116; \$106 SV Res

HIP HOP DANCE PARTY

Our dance classes will be sure to keep students active. Learn upbeat styles such as jazz and hip hop and move to your favorite songs. The students will also learn warm-ups such as stretching, isolations and across the floor exercises!

Location: community center

Registration deadline: March 10

AGES	DATE & TIME	COST
5 – 9	Sun, March 16 - May 18 <i>No classes April 20 and May 11</i> 3:30 – 4:15 pm	\$116; \$106 SV Res



Youth Programs

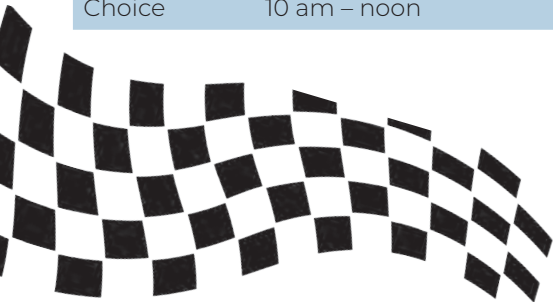
PAINT WITH ME

Grab your favorite adult for a fun morning of painting with Paint by Jill. A young person along with their grandparent, parent or another adult will create a painting together on one canvas. Children of all ages welcome but five and older is recommended.

One registration covers the cost of one child and their adult.

Location: community center
Registration deadline: one week before class
see page 30 for adult painting classes

ARTWORK	DATE & TIME	COST
Irish Gnome	Sat, March 8 10 am – noon	\$39; \$36 SV Res
Easter Vibes	Sat, April 5 10 am – noon	\$39; \$36 SV Res
Garden Critters	Sat, May 3 10 am – noon	\$39; \$36 SV Res
Teacher's Choice	Sat, June 7 10 am – noon	\$39; \$36 SV Res



INTRO TO RC CAR RACING

Interested in RC Cars? Want to try racing them on a track? Then come join us as we explore what makes them work and get to try them out. Participants will leave with a better understanding and get some time testing out their driving skills on a few different types of RC Cars. Participants can use RC Cars provided or use their own on approval.

Location: community center
Registration deadline: May 13

AGES	DATE & TIME	COST
5 – 14	Tues, May 20 6 – 7 pm	\$32; \$28 SV Res



RC CAR RACING

Want to drive RC Cars on a track? Then come join us and you can test your driving skills on a few different types of RC Cars. Participants can use RC Cars provided or use their own on approval.

Location: community center
Registration deadline: May 13

AGES	DATE & TIME	COST
11 – 17	Tues, May 20 7:15 – 8:15 pm	\$32; \$28 SV Res



CHESS SCHOOL

Chess teaches:

- Math concepts
- How to strategize
- Spatial and critical thinking
- Focused concentration
- Memory building skills

Open to all level of players. The professional coaches divide the room by abilities. Beginners learn basic game rules and opening tactic moves. Intermediate and advanced players learn sophisticated combinations and strategies and advanced opening moves. Best of all - chess is fun!

Location: community center

Ages: 5 – 15

Registration deadline: February 28

DATE & TIME	COST
Sat, March 8 – April 26 10 – 11:15 am	\$146; \$136 SV Res

Registration deadline: April 25

DATE & TIME	COST
Sat, May 3 – June 7 10 – 11:15 am	\$112; \$102 SV Res

Registration deadline: February 26

DATE & TIME	COST
Wed, March 5 – April 23 6:15 – 7:30 pm	\$146; \$136 SV Res

Registration deadline: April 23

DATE & TIME	COST
Wed, April 30 – June 4 6:15 – 7:30 pm	\$112; \$102 SV Res



BABYSITTING 101

This class will cover:

- First Aid
- Sitter safety
- Crafts, toys & childproofing
- Nutrition

Location: community center

Registration deadline: one week before class

AGES	DATE & TIME	COST
10 – 13	Sat, March 22 8 am – noon	\$77; \$70 SV Res
10 – 13	Sun, April 13 1 – 5 pm	\$77; \$70 SV Res



BABYSITTING FIRST AID

Students interested in continuing their babysitting skills will learn:

- Recognizing an emergency
- When to call for help
- Care for injuries and allergic reactions
- How to help a choking child/infant

Students will receive a first aid certification

Location: community center

Registration deadline: one week before class

AGES	DATE & TIME	COST
10 – 13	Sat, May 10 8 – 11 am	\$52





LIL NINJAS

Lil' Ninjas is specifically designed to enhance your child's development in a fun and motivating way. Class focuses on improving basic listening, social, and motor skills. Our instructors work on focus, team work, control, balance, memory, discipline, fitness, coordination, and respect.

Class is limited to eight students. Sun Yi Academy uniforms are required. Uniforms can be purchased for an additional fee (cash or check) with the instructor the first night of class.

Location: community center — studio 3

Registration deadline: April 1

AGE	RANK	DATE & TIME	COST
4 – 6	High	Wed, April 2 – May 21 5:15 – 5:45 pm	\$96; \$88 SV Res
4 – 6	Low	Wed, April 2 – May 21 5:45 – 6:15 pm	\$96; \$88 SV Res
4 – 6	Low	Thurs, April 3 – May 22 5:15 – 5:45 pm	\$96; \$88 SV Res
4 – 6	High	Thurs, April 3 – May 22 5:45 – 6:15 pm	\$96; \$88 SV Res

INTRODUCTION TO TAE KWON DO

This class is for students new to Sun Yi's Academy of Tae Kwon Do. Students will learn the fundamental skills of Tae Kwon Do. No uniform is needed for this class. Wear comfortable clothing.

Location: community center — studio 3

Registration deadline: April 1

AGE	DATE & TIME	COST
7+	Tues, April 1 – May 20 5:30 – 6:15 pm	\$96; \$88 SV Res

TAE KWON DO

New students must take Introduction to Tae Kwon Do before taking a ranked class.

Tae Kwon Do is unlike other martial arts programs, incorporating physical and mental elements into each class. Classes teach kicking, punching, striking, and blocking techniques through traditional Tae Kwon Do. Students will improve stamina, strength, speed, agility, coordination, balance, reflexes, concentration and confidence.

BELT	RANK
White through Orange	Low
Green	Middle
Blue and above	High

Location: community center — studio 3

Registration deadline: April 1

Pre-requisite: Introduction to Tae Kwon Do

AGE	RANK	DATE & TIME	COST
7+	Low	Tues & Thurs, April 1 – May 22 6:15 – 7:15 pm	\$192; \$176 SV Res
7+	High	Tues & Thurs, April 1 – May 22 7:15 – 8:15 pm	\$192; \$176 SV Res





Youth Sports

PRIVATE & SEMI PRIVATE TENNIS LESSONS

Personalized high-quality tennis instruction for players who want to improve their court game. Our instructors will help you work on your groundstrokes, serves, volleys, lobs, and smashes in an individual setting. This program offers one-on-one tennis instruction for the casual or avid tennis player.

Semi-private lessons are for two participants of equivalent ability. Participants must enroll with a partner for semi-private lessons. Each participant pays a registration fee.

CLASS	TIME	COST
Individual private	5 lessons 60 minutes	\$200; \$190 SV Res
Semi-private	5 lessons 60 minutes	\$118; \$108 SV Res

REVSports BASKETBALL

Come and enjoy the fun filled camps that RevSports has to offer! Each camp will provide instruction, games, and fun! All equipment is provided.

Location: community center
Registration deadline: April 1

AGE	DATE & TIME	COST
3 – 4	Mon, April 7 – 28 5 – 5:25 pm	\$95; \$86 SV Res
4 – 6	Mon, April 7 – 28 5:30 – 6:10 pm	\$95; \$86 SV Res
4 – 6	Mon, April 7 – 28 6:15 – 6:55 pm	\$95; \$86 SV Res
6 – 8	Mon, April 7 – 28 7 – 7:40 pm	\$95; \$86 SV Res



SKYHAWKS

BASEBALL TOTS

Baseball Tots classes introduce your young athlete to baseball with focuses on motor skills, body control, and basics like throwing, hitting, and catching.

*Parent participation required

Location: Shamrock Park

Registration deadline: April 18



AGES	DATE & TIME	COST
2 – 3	Sat, April 26 – May 17 8:30 – 9 am	\$79; \$69 SV Res
3 – 4	Sat, April 26 – May 17 9:10 – 9:40 am	\$79; \$69 SV Res

SOCCER TOTS

Introduce your little athlete to soccer at Skyhawks Soccer Tots! Our curriculum is designed to provide age-appropriate skill development with new challenges as they learn and grow. Soccer Tots focuses on motor skills, body control, and basic skills (like dribbling, passing, & shooting), and above all else, FUN!

*Parent participation is required

Location: Shamrock Park

Registration deadline: April 21



AGE	DATE & TIME	COST
2 – 3	Mon, April 28 – May 19 4:45 – 5:15 pm	\$79; \$69 SV Res
3 – 4	Mon, April 28 – May 19 5:30 – 6 pm	\$79; \$69 SV Res

MINI-HAWK SOCCER

Fuel the passion for soccer in your young athlete at Mini-Hawk Soccer. From passing drills to fun games and mini-scrimmages, Skyhawks blends skill development with the joy of the game, creating a well-rounded introduction to soccer.

Location: Shamrock Park

Registration deadline: April 21

AGE	DATE & TIME	COST
4 – 6	Mon, April 28 – May 19 6:15 – 7 pm	\$95; \$86 SV Res

TENNIS

Kickstart your tennis journey with Skyhawks Beginners Tennis! We emphasize skill enhancement, practice, and match play for a well-rounded tennis experience. Our dedicated Skyhawks staff also teach important life skills such as respect and sportsmanship. See you on the court!

Location: Shamrock Park

Registration deadline: April 18



LEVEL	AGES	DATE & TIME	COST
Beginner	6 – 10	Sat, April 26 – May 17 10 – 10:50 am	\$95; \$85 SV Res
Intermediate	8 – 12	Sat, April 26 – May 17 11 – 11:50 am	\$95; \$85 SV Res

TENNIS TOGETHER

Join Skyhawks for this unique opportunity to participate in an introductory tennis program alongside your youth athlete/child! Participate in fun drills and games that will hone your tennis skills while creating a memorable shared sporting experience!

**Please send one adult with one child*

Location: Shamrock Park

Registration deadline: April 18

AGES	DATE & TIME	COST
5 – 8	Sat, April 26 – May 17 12:10 – 1 pm	\$179; \$169 SV Res





TGA PROGRAMS

TGA (Teach. Grow. Achieve.) brings both the golf course and pickleball court to your student, making it convenient and affordable to learn and play these sports in a fun and safe environment. Kid-friendly instructors help students develop skills and knowledge in both golf and pickleball, while using these sports to teach valuable life lessons like honesty and sportsmanship. Best of all, top-notch equipment and training materials are provided, so students of all skill levels have the chance to come out and play with TGA!

PICKLEBALL

Location: Shamrock Park
Registration deadline: April 15

AGES	DATE & TIME	COST
6 – 8	Tues, April 22 – May 27 5:30 – 6:30 pm	\$189
9 – 12	Tues, April 22 – May 27 6:30 – 7:30 pm	\$189

GOLF

Location: Shamrock Park
Registration deadline: April 17

AGES	DATE & TIME	COST
6 – 8	Thurs, April 24 – May 29 5:30 – 6:30 pm	\$189
9 – 12	Thurs, April 24 - May 29 6:30 – 7:30 pm	\$189





Our leagues are held in collaboration with Arden Hills, Mounds View, New Brighton, and Fridley. Practice and game times will be determined after teams are formed and depend on the coach's availability. Volunteer coaches will contact participants with team and schedule information 1-2 weeks before league starts.

Registration deadline: April 18 (\$20 late fee after deadline)

Leagues based off of 2025 - 2026 school year

SUMMER CO-REC T-BALL & BASEBALL LEAGUES

Learn basic skills as well as teamwork and good sportsmanship. Games are umpired by coaches. Players will receive a t-shirt and hat.

Grades 1 - 4 will be coach pitch.

LEAGUE	AGE	DATES	COST
Preschool T-ball	3 - 4.5	Wed, May 28 - July 30	\$69
PreK/Kindergarten T-ball	4.5 - 6	Mon, June 2 - July 28	\$69
Grades 1 - 2 Baseball	6 - 8	Tues & Thurs, May 29 - July 31	\$79
Grades 3 - 4 Baseball	8 - 10	Mon & Wed, May 28 - July 30	\$79

SUMMER CO-REC SOCCER LEAGUES

Learn the basic skills and fundamentals of soccer. All players must wear shin guards but cleats are not required. Players will receive a t-shirt.

LEAGUE	AGE	DATE	COST
PreK/Kindergarten	4 - 6	Tues, May 27 - July 29	\$69
Grades 1 - 2	6 - 8	Mon & Wed, May 28 - July 30	\$79
Grades 3 - 4	8 - 10	Tues & Thurs, May 29 - July 30	\$79
Grades 5 - 6	10 - 12	Mon & Wed, May 28 - July 30	\$79
Grades 7 - 8	12 - 14	Tues & Thurs, May 29 - July 31	\$79



VOLUNTEER COACHES NEEDED!

Coaches meetings will be held at the community center. Practices and games will be held at various parks in Shoreview or neighboring cities.

Benefits of volunteer coaching:

- Give back to the community
- Provide youth with fun experience
- 50% refund of registration fee

Important information:

Coach will contact participants one week prior to start. Detailed schedule given out at first practice. Teammate requests can be made at registration.



SOCCER COACHES MEETING:
TUES, MAY 13, 6 PM



T-BALL/BASEBALL COACHES MEETING:
WED, MAY 14, 6 PM





JOIN OUR TEAM

Part-time, flexible hours,
free community center membership

ADVENTURE QUEST PLAYGROUND INSTRUCTOR – CAMP COUNSELOR

\$13.50-17.50/hour June-August

Lead kids ages 3-11 in summer playground events, sports, crafts, songs, art and special events.

GROUP FITNESS INSTRUCTOR

\$20-27/hour

Seeking certified instructors to teach yoga, cardio or strength classes.

LIFEGUARD

\$14-16/hour

(Up to \$20/hr for certain shifts)

No experience required. Training is provided through Ellis Certification. Must be at least 15 years old.

MANAGER ON DUTY - EVENING EVENTS

\$19-25/hour

Assist guests, complete room set-ups, follow safety/security procedures.

*Limited Friday & Saturday evenings,
depending on facility rentals.*

PERSONAL TRAINER

\$20-27/hour

Nationally-certified trainers provide personalized workouts for general fitness & sport-specific conditioning.

POOL COORDINATOR

\$17.50-22/hour

Coordinate activities/operations, supervise/train staff, schedule shifts, carry out policies and maintain systems.

SEASONAL MAINTENANCE WORKER

\$15-19.50/hour

Parks, Streets and Utilities are hiring full-time summer help to perform general labor.

SPECIAL EVENTS STAFF

\$12.50-16/hour

Help host our Egg Hunt, Kids Garage Sale, Halloween Hoopla, etc. Duties include decorating and clean-up.

SPORTS COORDINATOR

\$17-22/hour

Develop, implement and coordinate a variety of recreation programs. Respond to inquiries and provide excellent customer service.

SPORTS INSTRUCTOR

\$14-18/hour

Lead youth and adults in a variety of sports activities. Sports background required.

SUMMER DISCOVERY – VARIOUS POSITIONS

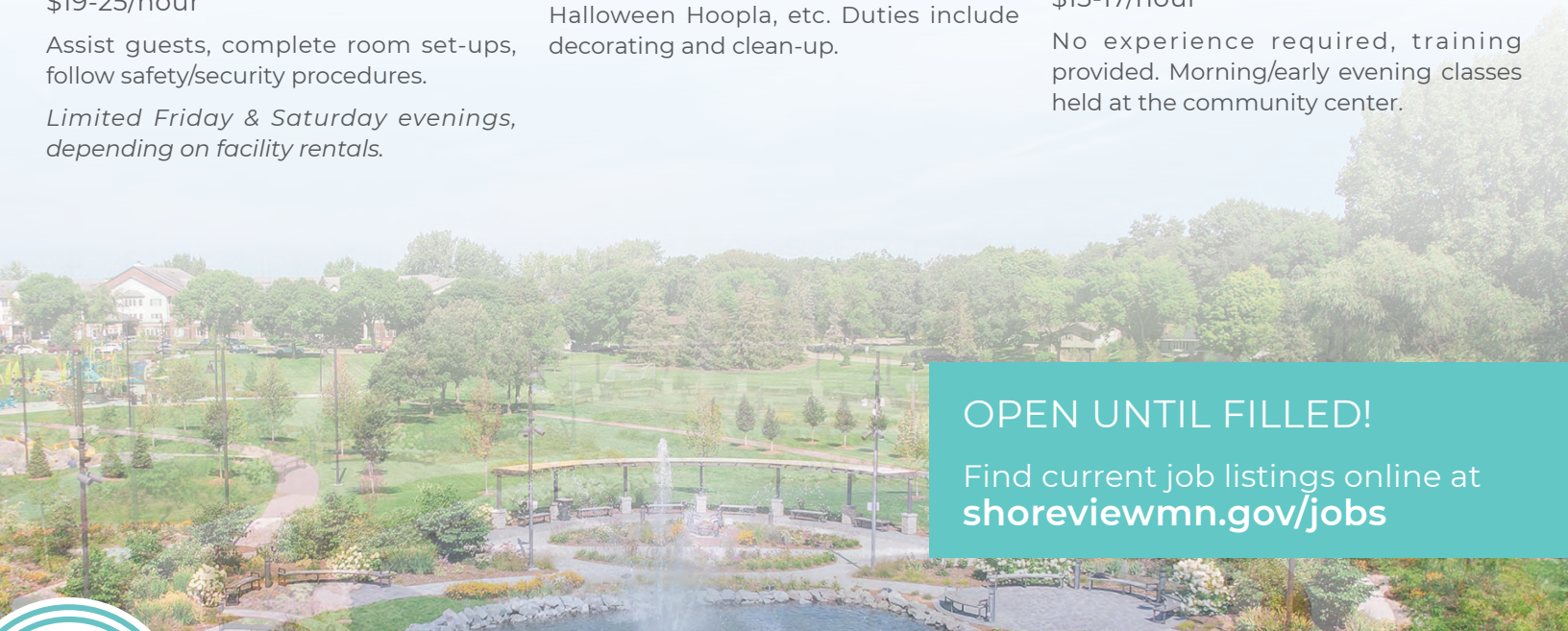
\$14-18.50/hour June - August

Supervise kids in grades K-6 in our child care program this summer. Plan arts and crafts, sports, field trips and more.

SWIMMING INSTRUCTOR - WE WILL TRAIN

\$15-17/hour

No experience required, training provided. Morning/early evening classes held at the community center.



OPEN UNTIL FILLED!

Find current job listings online at
shoreviewmn.gov/jobs



We are an equal opportunity employer.



		Acres	Ballfields	Basketball Court	Football	Skating Rink	Paths	Pickleball	Tennis	Picnic Area	Playground	Shelter	Soccer	Circuit Training
Bobby Theisen Park	3575 Vivian Avenue	15		1	✓	✓	✓	6	2			1	✓	
Bucher Park	5900 Mackubin Street	25	2	1	✓	✓	✓		2	✓	✓	1	✓	✓
Heritage Park	1170 Lepak Court	3												
Lake Judy Park	900 Tiller Lane	5		½			✓			✓	✓			
McCullough Park	955 County Rd I	75	2	1	✓	✓	✓		2	✓	✓	1	✓	
Ponds Park	190 Sherwood Road	1					✓			✓	✓			
Rice Creek Fields	5880 Rice Creek Pkwy	10	4				✓			✓	✓			
Shamrock Park	5623 Snelling Avenue	23	2	1	✓	✓	✓		2	✓	✓	1	✓	
Shoreview Commons	4580 North Victoria	40		1	✓	✓	✓	2	2	✓	✓	1	✓	
Sitzer Park	4344 Hodgson Road	8	2	1		✓	✓		2	✓	✓	1		
Wilson Park	815 County Road F	13	2	1		✓	✓			✓	✓			

The following are operated by Ramsey County Parks & Recreation.

651-266-0300

ramseycounty.us/parks

		Acres	Boat Ramp	X-Country Skiing	Fishing	Hiking Trails	Hockey Rink	Golf Course	Paths	Picnic Area	Playground	Shelter	Swimming
Island Lake Cty Park	3611 Victoria Street	167	✓		✓			✓	✓	✓	✓	✓	
Lake Owasso Cty Park	370 N. Owasso Blvd.	9	✓		✓				✓	✓	✓	✓	✓
Shoreview Ice Arena	877 Highway 96						✓						
Snail Lake Regional Park	580 Lake Blvd.	400	✓	✓	✓	✓			✓	✓	✓	✓	✓
Turtle Lake Cty Park	4979 Hodgson Road	9	✓		✓					✓	✓	✓	✓

For indoor pickleball and swimming visit the Shoreview Community Center.





City of Shoreview
4600 Victoria Street North
Shoreview MN 55126

Presorted Standard
U.S. POSTAGE
PAID
TWIN CITIES, MN
PERMIT NO. 5606

WE'RE HIRING!



APPLY ONLINE

[SHOREVIEWMN.GOV/JOBS](https://shoreviewmn.gov/jobs)

SPRING & SUMMER JOBS!

